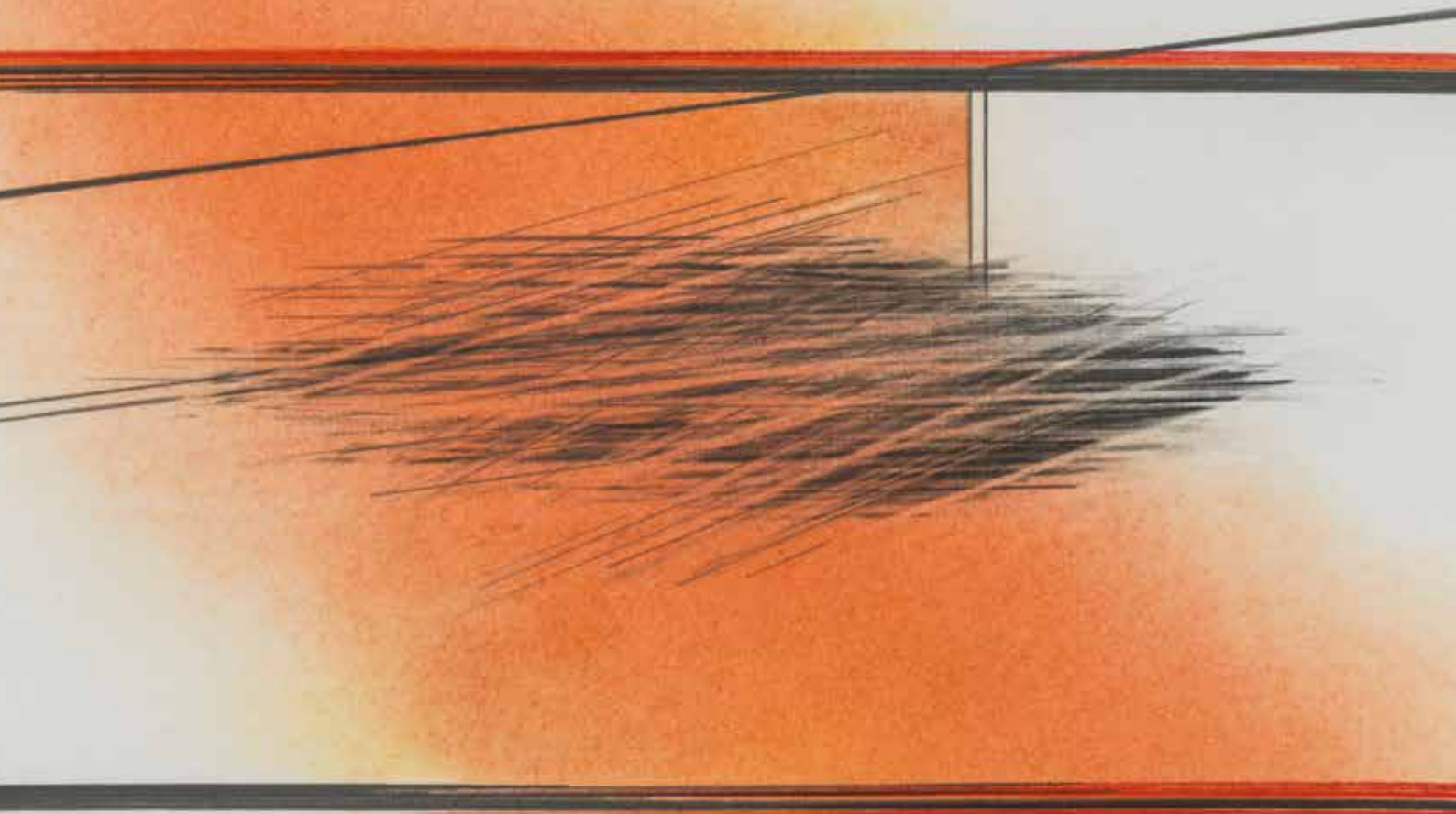




ANN CHRISTOPHER

Broken Time

15th May - 3rd July



GALLERY PANGOLIN

9 CHALFORD IND. ESTATE CHALFORD GL6 8NT

www.gallery-pangolin.com

gallery@pangolin-editions.com

01453 889765

**BROKEN TIME 12, 2021
pastel / crayon / graphite**



**COVER ARTIST:
ADAM HINKS**

"DON'T CONFUSE LEGIBILITY WITH GOOD DESIGN." SOUND ADVICE FROM A HERO OF MINE 'DAVID CARSON'. GRAPHIC DESIGN TODAY HAS LOST MUCH OF IT'S FREEDOM. WE'RE FORGETTING TO EXPLORE RANDOM EXPRESSION AND MANY NOW FOLLOW A PEER INSPIRED UNIFORMITY OF WHAT IS CONSIDERED "GOOD DESIGN". I CREATED THIS PIECE IN 15 MINUTES USING SIMPLISTIC DIGITAL DRAWING TOOLS WITH NO REAL POINT OTHER THAN MY OWN THOUGHTS AROUND BOOKING MY FIRST COVID 19 VACCINE"

PDCO.CO.UK
@ADAM_HINKS

EDITOR'S NOTE

WELCOME TO ISSUE 73.

We had to make a few last minute adjustments to our flat-plan this month. LISTINGS ARE COMING BACK!

As an arts magazine which aims to find every little event going on across the Stroud District and print them (using vegetable ink. Pungent.) onto paper (90gsm uncoated. Nerdy,) it brings us much joy to once again fill our magazine with listings. As time goes on, month by month we'll no doubt get back to where we were (which seems like many moons ago) as our venues and art spaces fill up their forthcoming programmes with every form of art imaginable.

As well as listings we take our usual deep delve into other happenings including a new in-depth online series which aims to understand and appreciate music from the performer's perspective, speak to an artist reviving the art of signwriting, welcome the return of a renowned arts trail under a new management team, introduce you to a new collaborative space/arts venue, celebrate the re-opening exhibition at a world-class sculpture gallery right on our doorstep, cover a posthumously released poetry collection from a much missed Stroud poet, ask one of our friends to curate a playlist, invite local young artists to take over a couple of our pages...

...anyway we're rambling on a bit here. Enjoy the words and pictures. See you next month.

Long live the printed word.

Alex Hobbis and Adam Hinks

FRONT COVER: Adam Hinks

CONTRIBUTING WRITERS:

Adam Allington Jones, Rob Clucas Tomlinson, Paul Harper, William Stokes, Stella Howe and Judith Gunn

CONTRIBUTING PHOTOGRAPHY:

Steve Russell Studios and Russell Sach

TEAM:

ALEX HOBBS

Advertising/Editorial/Listings
alex@goodonpaper.info

ADAM HINKS

Artwork and Design
adam@goodonpaper.info

ONLINE: goodonpaper.info

FACEBOOK: /GoodOnPaperStroud

TWITTER: @GoodOnPaper_

INSTAGRAM: @GoodOnPaperStroud

SPONSORED BY:

Laura Kinsella
Foundation

PRINTED BY:

Tewkesbury
Printing
Company

DELIVERED BY:





**THE SOCIETY OF
Wood Engravers**



83rd Annual Exhibition
MUSEUM IN THE PARK
Stroud, GL5 4AF
18 May - 4 July
Admission free, advance booking necessary



Visit www.museuminthepark.org.uk to book

Tony Dreihfil: Ephemeral Foot

World Textiles Weekend

2021

SATURDAY, June 26th
10.00am - 5.00pm
SUNDAY, June 27th
10.00am - 4.00pm

**Bisley Village Hall,
Manor Street,
Nr STROUD,
Gloucestershire.
GL6 7BJ**

Please see our **NEW** website for details
www.textilefairs.co.uk

Delicious food by the lovely Jo - offering coffee, teas, cakes & light lunches.

Wonderful World Textiles include:
Linda Cliff: Textiles, workwear & trimmings from England & France
Martin Conlan of Slow Loris: Tribal Textiles from Southwest China
Nataliya Cummings of Experience Ukraine: Lovely rugs, clothes & artefacts from Ukraine.
Jennifer Evans of Jenpatola: Decorative Textiles and Jewellery sourced in India
John Gillow: African, Indian and South East Asian Textiles plus his own textile books
Diane Logan of Customized: Upcycled garments & wearables
Dorothy Reglar: Individual garments by designer maker Dorothy, plus baskets & artefacts from Thailand and Laos.
Tiger Moth: rugs, cushions, scarves and jewellery from around the world
Other stalls yet to be finalised when going to press.
OUTSIDE - Fabazaar: Contemporary designed Asian wearables, textiles & homeware

Admission £1.00, children under 15 free
Please bring cash or cheque

Information from **Bailey Curtis** on 01453 823375
bailey@baileycurtis.com or www.textilefairs.co.uk

We're a Covid-19 compliant event. We're used by you, but please bring your mask. Please follow all current Government guidelines.

MUSIC THAT MATTERS

BY ADAM ALLINGTON JONES



The Mirry Project

MUSIC MATTERS, RIGHT?

MUSIC IS IMPORTANT. MUSIC HAS ACTED AS A SOCIAL BOND AND SALVE FOR AS LONG AS WE'VE BEEN MAKING THE STUFF. ALL TRUISMS NO DOUBT, BUT IN AN AGE WHERE MUSIC MIDDLEMEN CAN BUY FOOTBALL CLUBS WHILE THE MUSICIANS THEMSELVES ARE PAID PITTANCE, PERHAPS IT'S A MESSAGE THAT NEEDS TO BE REITERATED, SHOUTED FROM THE ROOFTOPS OR WRITTEN UP ACROSS DOUBLE-PAGE SPREADS IN LOCAL PAPERS.



Alabaster dePlume



Emma Warren

But amid all this doom and gloom comes something of a white knight in the shape of Hawkwood's recently launched Music That Matters series, developed in partnership with the forward-thinking group behind Totnes' Sea Change festival. I spoke to Hawkwood's music programmer Matthew Shaw, about the series and their ongoing commitment to Stroud's cultural offer.

HOW DID YOU FIRST COME TO BE INVOLVED WITH PROGRAMMING AT HAWKWOOD?

I was first invited by Alicia [Carey, CEO of Hawkwood] to join a panel discussing video on demand platforms for Seed Festival a few years back, and from there we got to talking about the abundance of creative talent in Stroud and ways in which we could more closely join up that creativity with Hawkwood and everything it has to offer. Perhaps in the past local musicians have been aware of Hawkwood's funded arts residencies but maybe wouldn't think to apply or wouldn't consider themselves to be eligible due to being too close in proximity, somehow.

I was very interested in the Conversations That Matter strand of talks held at Hawkwood and how, being an arts and education charity, Hawkwood's mission is to support both the arts and education along with focusing on sustainability and working in an ethically-minded way. So, I set about programming talks with people who share that passionate focus on ecology including Tim Smit, creator of the Eden Project, Alan Moore, author of 'Do Build' and others.

WHAT WAS THE IMPETUS BEHIND THE MUSIC THAT MATTERS SERIES? WHAT'S ITS ETHOS?

From these successful talks, I thought that it might be interesting if instead of having a single person talking as an advocate or activist we could pair them up with someone whose approach to the same subject might be slightly different. It started by pairing human rights activist Jaz O'Hara from the Worldwide Tribe charity with Steve Savale from Asian Dub Foundation, so Steve was explaining how the purpose of ADF was as an anti-racism vehicle and to express their experiences growing up in the UK. I think this way of discussing societal issues via music is fascinating.

This early example got us thinking about other ways we could take a musical perspective on subjects affecting everyone. On top of having these interesting discussions it was also an opportunity to highlight great music and a stage for local musicians in the near-future too.

What's been great about Music That Matters is dividing the programming with Alicia who, prior to working for Hawkwood, was a touring classical musician and having her expertise on hand has brought another angle to the programme.

WHO HAVE YOU GOT COMING UP AS PART OF THE SERIES?

We've got Emma Warren coming up, she wrote a great book called Make Some Space all about London DIY venue Total Refreshment Centre and how they went about dissolving the boundaries between artist and spectator, this fed into Document Your Culture her latest publication which sets out help you do exactly that which we will be exploring through the lens of the pandemic.

Another project that we're really excited about exploring with this series is the Mirry project. The genesis of this project was musician Tom Fraser discovering a treasure-trove of recordings composed by his Great Aunt Mirry that nobody knew about and were only unearthed after her death. It's going to be a fascinating discussion touching on the roles carers play in our society - Mirry was a care worker all her life - and the secret passions and ambitions we all harbour.

In June we're welcoming Alabaster DePlume back to Stroud where, along with performing his music, we'll be discussing how his experiences working with adults with learning disabilities have informed what he does. Not only did he release one of the best albums of the last few years but knowing the practical lived experience behind it, I really wanted to explore that further.

WHAT DO GIGS IN THE FUTURE LOOK LIKE TO YOU? WILL ZOOM CONCERTS BE A LOCKDOWN-SPECIFIC PHENOMENON OR SOMETHING WE INTEGRATE INTO THE FUTURE OF CULTURAL PROGRAMMING?

I see an interesting hybrid forming. For instance, for this series we would like the artists to physically come to Hawkwood where possible, performing outside if the weather permits with a limited audience of around 50 people - Hawkwood and Good on Paper will let you know first! - with the evening being filmed and released later or live-streamed there and then. You'll then get that atmosphere that people are currently missing from online gigs which can sometimes feel a bit stilted, but also as the lockdown is put behind us for the time being we still have to be mindful of those who either have health conditions or are still feeling unsure about venturing out. This can be a happy medium.

WHAT PLANS DO YOU HAVE FOR THE FUTURE?

We're really excited to be getting dates in the book for both bass music icon Dennis Bovell and at a later date Shirley Collins discussing her time song collecting across America in 1959 with Alan Lomax. Zakia Sewell is also upcoming, she's a DJ and creator of the My Albion series for Radio 4, in which she explores the symbols of British folk music and asks, "is this music really for me?" as a person of an ethnically diverse background. These are really important conversations to be having at the moment.

We're also working on a collaboration between Sea Change and Hidden Notes and hopefully getting a musical dialogue going between the local artists in both Gloucestershire and Devon, would be fantastic to hear from any local creatives who want to get involved...

.....
Forthcoming episodes in the online Music That Matters series include the Mirry Project on the 17th June with Tom Fraser, Kirsteen McNish and Rupert Morrison, singer, songwriter and saxophonist Alabaster dePlume on the 23rd June and author/radio presenter Emma Warren on the 27th July. For further information visit hawkwoodcollege.co.uk and seachangepresents.co.uk

ADAM ALLINGTON JONES IS A WRITER AND GARDENER BASED IN STROUD.





ELEANOR HARPER

BY ROB CLUCAS-TOMLINSON

High among the Sierra Nevada mountains in the Spanish province of Granada lies the quirky village of Capileira. It's 1400 metres above sea level, has just 600 inhabitants and is a myriad of meandering side streets, where fresh water springs pour out at every turn and 16th Century churches sit high up on rocks overlooking Mulhacen, the highest point in the Iberian Peninsula. It is also a village filled with beautiful hand-painted signs and it was here, while travelling through Andalusia, where Eleanor Harper fell in love with the craft. Travelling in exotic lands does that to you; the carefree sense of freedom and the romantic unreality it brings inspires the wanderer to believe that they can write a great novel or paint the night stars or change the world with a philosophical formula for human happiness, and the inspiration almost always flickers out upon returning to rainy England. But the artisan street signs resonated with Eleanor, and the feeling went deep. From Spain, she

travelled to California, and she dipped into Mexico, exploring towns where folk murals, big and loud and as bright as the sun, are an everyday expression of Central American life. This, too, fed her imagination, and instead of coming home again, she stayed on the east coast for 18 months, dedicating much of her time to learning the skills of sign writing until she felt confident enough to seek out employment in places closer to home.

"I emailed sign writers in England and asked to be an apprentice," she explains. "I contacted about 30 of them, and only three replied, one of whom said 'maybe'." Latching onto this, she moved to London and worked with the 'maybe' guy for two weeks. But the 'maybe' quickly turned into a 'not really' and so she moved again, back to her hometown in Hampshire. Still young and restless, and unable to find what she was looking for there, she instead came to Stroud, where a friend had a flat, and it is here where her reputation has soared. "I already knew that Stroud was alternative," she says, "and I had read Laurie Lee's 'As I Walked Out One Midsummer Morning' after my grandad had given me the book when I had told him that I was going to travel through Andalusia. I never wanted to settle before, but I'm happy here. People are

"IF I COULD SIGN-WRITE FOR ANY PLACE IN STROUD, IT WOULD BE POUNDLAND. I'D LIKE TO HAND-PAINT IT, TONE IT DOWN AND STOP IT FROM SHOUTING!"

definitely nicer, more open, and less quick to be negative." After seven years of leading a semi-nomadic existence, Eleanor had found a home. And when the pandemic struck, it served as a springboard for her to realise her potential, to put into practice all the skills that she had obtained.

"The pandemic pushed me to be a sign writer full time. The business that I worked for went bust and so I didn't have a job any more. I felt that there was little point trying to find a job during lockdown, and so I offered my services for free in the hope that I might make some connections." Those connections included Lotte and Miles at The Prince Albert in Rodborough, two people that Eleanor is happy to admit she was so determined to work with, she made herself known to them time and again, until they became friends and a commission followed! The new Prince Albert signs are stunning. If you haven't yet seen them, and owing to the lockdown, you'd be forgiven for this, you now must. They adorn the front and side of the pub, giving it a quirky facelift just in time for reopening, and it makes you want to step inside that beacon on the hill even more than before. There's also the blackboards outside Winstone's ice cream shop on Rodborough common, the mural for Kelmscott studio



on the Bath Road and the delightfully decorated Brimscombe bus shelter on the London road - a homage both to Edward Budding and Stroud's industrial past - all of these are Eleanor's work. You don't even need to wait for a bus to experience the beauty of her latter work. It's one of six designs by Stroud artists who have decorated bus shelters along the London Road as part of the Brimscombe and Thrupp Bus Shelter Art Project by Studio 18. You can visit all of them in an hour or so as part of a pleasant spring walk on a sunny weekend afternoon.

But Eleanor isn't resting on the laurels, she's ambitious and she wants to brand the town in her signs, in much the same way that I once wanted to stencil my poems over every major town centre building's walls when I was in my twenties. In the end I scribbled a few choice lines onto the facias of several lesser-known establishments - I won't tell you where in case the rozzers are still looking for me - though Eleanor is already some way to becoming the official sign writer of the uber-cool Republic of Stroud scene. Future projects include painting graphics on the soon to open Meta food and event space along George St and the sprucing up of Studio 3 Arts Collective on Nelson St. More commissions will undoubtedly

follow, and more of her signs will be seen by natives, tourists and commuters alike. If there's anyone out there with serious money to spend, a willing patron, perhaps, a philanthropist keen to support artisan projects, drop her a line and commission her, and others, to beautify Tricorn House. Just imagine what she could do to the place if time and finances were no barriers to creativity. Cars would grind to a halt on Cainscross roundabout as drivers stopped to gawp in wonder. Tricorn House is an eyesore and has been since time immemorial. And if it's still going to be there in another thirty years' time, standing alone and dishevelled, like a stubborn mule, then let the artists on to it. Let Eleanor work her magic.

.....
 For further examples of Eleanor's work visit eleanorharpersignwriter.com and follow her on instagram [@eleanorsigns](https://www.instagram.com/eleanorsigns) for news and updates.

—
 ROB CLUCAS-TOMLINSON IS A WRITER AND QUIZ WRITER WHO ALSO GOES UNDER THE NAME MR. BOBBINGTON. HE HAS A FREE QUIZ SITE - BOBBINGTON'S BAFFLER! - BAFFLER.CO.UK - AND HE HAS BEEN HOSTING REGULAR ZOOM QUIZZES THROUGHOUT THE PANDEMIC.



Julia Gooden

SELECT ARTS TRAIL

BY PAUL HARPER

THE SELECT ARTS TRAIL 2021, WHICH WILL BE TAKING PLACE OVER TWO WEEKENDS IN JUNE, WILL KICK OFF A LONG AWAITED SUMMER OF ARTS EVENTS IN THE FIVE VALLEYS, AFTER THE CANCELLATION OF SO MUCH IN 2020.

The Select Arts Trail grew out of the highly successful Stroud International Textile Festival (SIT) as part of a year round programme of exhibitions and events that was expanded beyond textile art to embrace the full gamut of arts and crafts. After over 20 years the founder and creative force behind SIT, Lizzie Walton, stepped down last year to pursue other ventures and to allow the project to evolve in new directions.

Under its new name and the leadership of Creative Director, Elizabeth Bailey, Select Arts will continue to promote local makers and artists, whilst developing

new initiatives and collaborations. Elizabeth has a background working in Culture and Heritage organizations and is currently completing a Masters degree in Cultural Theory and Arts Policy. She brings a dynamic, forward-looking vision to Select Arts that builds on the successful foundations laid down by Lizzie.

Plans for the future are still in development, but the 2021 Trail will see the introduction of some new elements that will be markers for Elizabeth's fresh approach. One key feature will be the launch of a Young Artist Collective, which will provide a platform for emerging artists who would not ordinarily be able to take part. There will be a network of host venues around the Five Valleys who have offered space for these artists, as well as other guest artists, to exhibit their work. The Trail will provide an opportunity for new work to be seen and for the artists to encounter a new audience. But beyond this, she wants the Collective to be a vehicle for providing support and encouragement at an early stage in their careers.

There are a number of concentrations of artists and makers located in the disparate workspaces that are dotted around the Stroud Valleys. Some of these hubs have regularly featured on the trail, but this year there will be more of them, and Elizabeth wants to make more of them. There will be suggested cycle and walking routes linking these centres of activity and many of them will be putting on special events and hosting invited artists. Many of these artists have responded to a call out and attended a guest network event, which matched them to appropriate hosts.

Over 50 artists, makers and collectives are signed up for the Select Trail this year. Many are established participants who have taken part in the Trail over the last two decades, and it is always good to see new work and to catch up with favourites. However, as well as being an opportunity to visit some new locally based artists, it will be exciting to

the ground floor of the building, with homemade cakes and locally sourced drinks. The Select Trail will be the first chance to see the spaces and the work being created by the studio residents and guest artists.

Lizzie Walton had a talent for identifying significant textile trends and artists, and for bringing them to Stroud for

to work with and support the creative practice of artists from the Five Valleys. Talking to her, the word 'collaboration' comes up repeatedly and it is clear that she sees this as an important building block for the future of Select Arts. She describes herself as being open to any ideas or partnerships that can make things happen. This is a refreshing attitude that will help to maintain the Trail as a vital part of the arts ecology in Stroud as it continues to evolve.

Joining Elizabeth as part of the new Select Arts team is Ruby Gilding, who, as well as being a producer in her own right, with a wealth of experience of working in the arts, is responsible for publicity and digital content. The publicity for the Select Trail has always been one of its strengths, and the beautifully designed and produced brochure will continue to be a core part of the Select Trail for artists and visitors alike. The brochure is free to collect from a number of outlets around the Five Valleys.



Davina Loveridge

discover artists who have not shown in the area before.

One of the new hub venues taking part in this year's Trail is Three Storeys. Based in the heart of Nailsworth, Three Storeys is a creative venue that forms "a unique community for creative working." The historic building has nine studio spaces for resident 'Storey Makers', who include everything from textile design to willow weaving, architecture to film among their practices. As well as a workspace and a gallery, Three Storeys has a fully accessible café based on

the International Textile Festival. The encounter between contemporary practice and Stroud's textile heritage, between local, national and international perspectives was part of what made the Festival so successful. Elizabeth's opening up of the Trail so that it has an outward looking focus as well as drawing on the distinctive strength of the visual arts and crafts locally, suggests that she has similar ambitions for Select Arts.

Nevertheless, she is very mindful of local distinctiveness and wants to continue

The Select Trail in 2021 will be taking place over two weekends, held on the 19th-20th and the 26th-27th June. With a renewed focus on the five valleys, the artist studio visits will be supported by guided routes that make the most of what their locations offer. There will also be a programme of events held online or in-person - government regulations permitting. For further information visit selectartspresents.com

PAUL HARPER IS A LECTURER AND WRITER ON VISUAL ART AND CRAFT.



Fianna Heskeith

META: ESTIVAL

BY WILLIAM STOKES

June 21st does not just represent the light at the end of the pandemic tunnel. It's also, fittingly, the summer solstice. Not that many Stroudians will need reminding of that fact, of course. If we in the UK continue our current course out of lockdown, our arts and hospitality venues will soon begin to tentatively brush away their cobwebs, and as the sun reaches its zenith once again welcome folks through their doors. Safe to say, our cultural sector's word of the year has been 'survival.' It's mightily impressive, therefore, that a new and ambitious venue has during this time been in development right in the centre of Stroud. Meta's Matt Curtis and Rhia Davenport have June 21st marked in their calendar for one other reason: the aptly named Estival (if you know your Latin) promises a cavalcade of events to launch Meta as a venue with style. Organised along with Meta's primary collaborators — ramen experts Tomari-Gi and Rhia's own folk craft co-operative, Weven — it's set to be a celebration of the poetic convergence between nature and culture. Estival will run from the 19th June to the 4th July, hosting exhibitions, craft workshops, music, film screenings, food experiences and more. Central to the event series will be the work of a select group of artists, each offering their own responses to the bizarre experience that has been 2020 and 2021. Estival aptly identifies the pandemic in its press as a perverse kind of neopagan calendar, with no better antidote than to celebrate a realignment with the most fundamental natural cycle that governs our planet.

As its name would suggest, Meta is a venue driven by the awareness of things beyond oneself; a space where collaboration and community are at the very heart of its creative pursuits. Having met one another as art industry professionals, Matt and Rhia found mutual ground as passionate

proponents of this notion. The idea for a new Stroud venue came about as something of a blessing in disguise in the midst of the pandemic. "If Covid hadn't happened I'm not sure I would have jumped on it in the same way," Matt reflects. "It created the opportunity to take on the building in the first place, but it also inspired me to do something like this."

"I was made redundant last summer, and I wanted to grow out of that with something strong and positive," says Rhia. "I was looking for premises when Matt said he was setting up this venue, and I said, 'you don't want to collaborate, do you!?' I've always been a maker. Even when I was studying fine art at university, I never actually wanted to be an artist. I identified completely as a craftsman, or a maker. Even just a learner!"

Matt's partner Lily Cheetham and her business Archetype Fine Art Services also played a key role in establishing the venue. "The core of her business is picture framing and the relationship between Archetype and Meta is a key component." A fine art painter by vocation, Matt explains: "I'm a maker as well. I've always made things. I was in the fabricating workshops at my old job, making things every day. Working in the art industry, I've connected over the years with a lot of artists and a lot of galleries. You meet lots of amazing people and see lots of amazing art, but you're always aware of the fact that it's an industry that can chew you up and spit you out, and it's not always focussed on the artists. It's about commodifying something. I've always been about trying to support the artist and work with them and create a platform, instead of just creating a vehicle to make a profit."

The cultivation of folk arts is a central tenet to Weven, and by extension to

Meta as a whole. "The skills required for so many different folk crafts are being lost," Rhia reflects. "They don't get shared and they die out. I wanted to find ways to make those crafts more accessible and interesting, to try and revive them and give them a little more life and longevity. Things like hat-braiding with straw. Clog making as well: wooden shoes are the best way forward for shoes! But these things are impractical and expensive, so it puts people off. They're dying crafts and it might only be a matter of years before no-one has those skills anymore. And there won't be a return from that."

"It's important to take care of the industry of the craft itself," says Matt. "People are having to confront those ethical choices more and more. And that's a good thing."

Meta's spacious lower half is home to Weven's permanent fixture, as well as to Tomari-Gi. "they're a perfect fit, really," says Matt. "The coffee is roasted here in Stroud, Noni's Coffee Roasters. I was really excited to work with her on the coffee. We're also working with a few local breweries for the bar."

"Weven, Meta and Tomari-Gi," Rhia chimes in. "Three different entities working together under the same roof, in a symbiotic way."

A gorgeously lofty exhibition and performance space occupies the venue's upper level. "When the sun is shining and you walk into that upstairs space... It really is quite inspiring," reflects Matt. "It's really unusual to have a space like that right in the centre of town. You've got big spaces like the Sub Rooms and the Goods Shed around the corner, but over the years we've lost a lot of the slightly more intimate spaces."

"The whole vision was that if you've got enough exciting things happening in the building, you could conceivably stay

here all day. You could do an exercise class, have a coffee, go to a talk or a workshop, have dinner and then go to an evening event. I'd like to think it can be a place people know they can turn up to and have a really great time; whether they want to eat, drink or see something, and be assured that it'll be a destination point. I've always imagined creating that kind of space."

Rhia has similar hopes for Meta. "I'd like it to be a place where you can make it your intention to visit but also stumble across the events that are happening," she says. "I want it to feel constantly surprising, where you want to keep checking the events because there's always going to be something that'll blow you away a little bit. There's collaboration at its core between these three different independent businesses, but there's also collaboration between the whole of the arts community. We really want to pull in as much of the incredible talent around here as we can."

For news and updates follow Meta on instagram @metastroud

FORTHCOMING EVENTS: Sat 12th: Make A Straw Visor: Traditional hat plaiting with straw, 11-4pm £45/Sat 19th - 3rd July: Exhibition 'Estival' opens, 10-6 free/ Sun 20th: Floral Solstice Garlands with Thistle By Nature, 1pm onwards £30/Mon 21st: Estival Private View with Soundscape, 5-8pm free/ Weds 23rd: Weird Walk 'Films from the Sun' 6pm onwards, free/Fri 25th: Willow basketry 10-4 £45 (sold out!)/Fri 25th: Tomari-Gi Host TV Dinners, Film & Food, 7pm £25/ Sat 26th: Botanical Dyeing onto silk with Sprout 11-3 £35 (sold out!)/Sun 27th: Three Suns Puppet Show, 2.30pm £8/Weds 30th: Orbury Common - Estival Soundscape and Visuals 8pm onwards, free/Thurs 1st July: Hand Painting onto Fabric from Life with Cesca Dvorak 6-9pm £45/Fri 2nd July: Sound Records: Estival inspired DJ set, 8pm onwards, free/Sat 3rd July: Summer foraging: How to appreciate and identify hedgerow foods with Anna Chrystal Stephens 10.30 - 1pm £30/ Sat 3rd July: Closing Party with Djs, £5 8 till late...

WILLIAM STOKES IS A WRITER AND MUSICIAN IN THREE-PIECE AVANT-PSYCH BAND VOKA GENTLE. HE HAS WRITTEN ON MUSIC AND MUSIC TECHNOLOGY FOR THE GUARDIAN, MOJO, FINANCIAL TIMES, SOUND ON SOUND, ELECTRONIC SOUND AND MORE. WITH VOKA GENTLE HE HAS MADE RECORDS WITH PRODUCERS FROM GARETH JONES (DEPECHE MODE, GRIZZLY BEAR, NICK CAVE) TO SAM PETTS-DAVIES (RADIOHEAD, FRANK OCEAN, ROGER WATERS).



Orbury Common



Paper Jungle - Three Suns



Thistle By Nature



Ben Edge - The Straw Bear



Weven



THERE'S COLLABORATION AT ITS CORE BETWEEN THESE THREE DIFFERENT INDEPENDENT BUSINESSES, BUT THERE'S ALSO COLLABORATION BETWEEN THE WHOLE OF THE ARTS COMMUNITY. WE REALLY WANT TO PULL IN AS MUCH OF THE INCREDIBLE TALENT AROUND HERE AS WE CAN.

Rhia Davenport



Tomari-G



EXHIBITION SPACE

GALLERY PANGOLIN: ANN CHRISTOPHER - BROKEN TIME

IMAGES BY STEVE RUSSELL STUDIOS

ANN CHRISTOPHER'S SOLO EXHIBITION - BROKEN TIME - IS A FIRST AT CHALFORD'S GALLERY PANGOLIN AND INCLUDES A SERIES OF FIFTEEN NEW DRAWINGS CREATED DURING LOCKDOWN. CHRISTOPHER'S WORK EXPLORES AND DRAWS FROM FOUND LINES, SHAPES, COLOURS, PATTERNS AND SHADOWS, SEEN IN THE EVERYDAY, HAPPENED ACROSS, ORDINARY OBJECTS; PHONE WIRES, WINDOW FRAMES, ROCK FORMATIONS AND THE SPACES BETWEEN THEM.





The new set of drawings came about by fluke. Royal Academician Hughie O' Donoghue tasked all RA's to do a drawing on the day it would have been the Summer Exhibitions varnishing day, the first of June; The RA's were then encouraged to contact each other and encourage one another to become part of this project.

"...whilst emailing and phoning friends and colleagues suddenly I realised that this was my life, this was what I was about, it reconnected me with the art world and totally kick started this series of drawings."

Christopher, who has curated the 'Broken Time' exhibition herself, has put a ten year timeline on the works included. It's not a retrospective, it's a collection of works that work together in her mind, many of which have never been shown at Gallery Pangolin before. "Shapes are echoed in the prints, some of them have tiny echoes in some of my drawings and sculptures. The majority of the sculptures have never been shown here, one or two of them have, but putting them together in a solo show is very different, it gives a whole new insight of what the work is about. Whereas if it's displayed on its own it says something completely different, they all connect in a way. To me it was a great opportunity to have a solo show, to bring a body of work together but in a different part of the country and the challenge of exhibiting in a new gallery space."

Her sculptures are elegantly poised, restrained and calm, belying

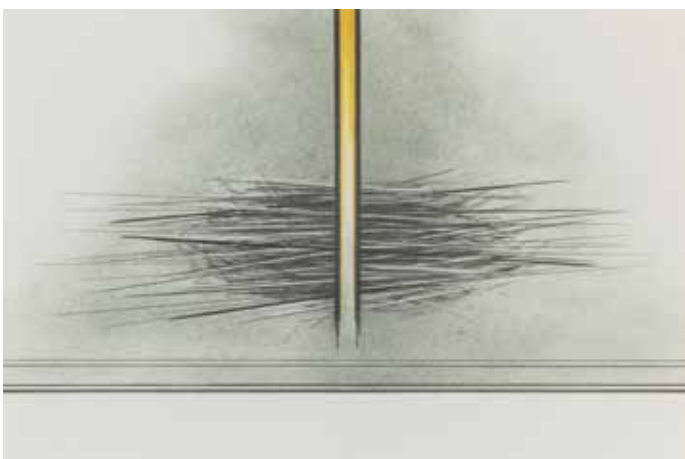
a meticulous attention to detail and texture. Complex in their inspiration, their quiet presence is evocative of modern industrial landscape, ancient monoliths and natural rock formations.

Christopher enjoys working in a wide range of materials, showcased in Broken Time is bronze, stainless steel, sterling silver and corten. Comprising both large and small sculpture, with extra additions such as neoprene, aluminium and her new favourite material concrete! - Making Broken Time unmissable for material lovers!

Christopher studied sculpture at the West of England College of Art and was the youngest female sculptor to be elected to the Royal Academy in 1980. She is a Fellow of the Royal Society of Sculptors and in 1994 was awarded an RBS Silver Medal for Sculpture of Outstanding Merit.

Christopher exhibits regularly and widely and has completed many public commissions. Her work is held in public collections including those of Bristol City Museum and Art Gallery, Pallant House Gallery, Salisbury Art Gallery, Royal Academy and the Royal West of England Academy.

Broken Time opened on the 15th May and runs until the 3rd July. For further information visit gallery-pangolin.com



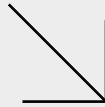


GOOD ON PAPER
YOUNG ARTISTS:

STUDIO 18: CLOSE TO DIRECT SUNLIGHT

BY STELLA HOWE

OUR WORLD IS CONSTANTLY MOVING, AS WE MOVE WITH IT, THE FLOW OF OUR LIVES AND ROUTINES CONTINUALLY EVOLVING, UNTIL THE PANDEMIC STARTED. FOR MANY OF US EVERYTHING CHANGED. WE BECAME HERMITS OF OUR OWN HOMES, AND FOR THE FIRST TIME IN WHAT FEELS LIKE FOREVER, WE STOPPED MOVING. IT WAS DAUNTING, THE UNCERTAINTY WEIGHED LIKE HEAVY FOG, BUT SLOWLY IT STARTED TO SHOW US SOMETHING NEW. EVEN THOUGH WE WEREN'T MOVING THINGS WERE CHANGING, THE TIME TO STOP AND THINK HAD PRODUCED A DESIRE FOR SOMETHING FRESH, TO ENVISION A DIFFERENT WORLD.



Reality became a lot less easy to ignore, the imminent threat of climate emergency, systemic racism and deep prejudice that hung under the most obvious danger: the arrogance and complacency of governments across the world. This exposure was crucial, it reached people of all backgrounds and ages, engaging entire communities to fight for a new world they could believe in. For the young artists involved in this project, this exhibition is about vision, exploring the desire for something new while we unpack the world around us. The pandemic highlighted a need for change and a reinforcement of community, throughout this exhibition we hope to form a new one by engaging with our viewers and fellow artists.

The focus centres around collaboration, as a group of artists we will be creating collective work that explores both our own art and current outlooks, but our aim for connection goes beyond our singular group. The collaborative work will extend to the gallery viewers themselves, large sheets and tapestries will be hung for people to draw and embellish on, there will be seating areas, dens, and communal spaces to encourage interaction. For us, this exhibition is about opportunity, it stands to create a community that is welcoming to everyone no matter who they are. We want to challenge the

traditional structure of a gallery space, the viewer often plays a passive role as they observe the work rather than being invited to engage, through interactive activities and our music section on the evening of the show we hope to encourage our audience to join us. The music section will be led by some of our artists and other young musicians, their sets will span across genres and the event will be accompanied by video, lighting and projection art. Music has always been an incredible force of unity, leading many movements and collectives throughout history. We hope this segment will honour that nature and help build up the connection we hope to create. It will be a chance for people to experience live music and public interaction that has been so sorely missed.

Working with Studio 18 has been an incredible opportunity, being granted a space in which we can fully enact our vision and one that provides incredible support and resources has been especially important as young artists. It re-enforces the idea of accessibility and allows us to be proactive and engaged with the actual construction of our show, the space has also allowed us to expand our range of media as some artists will explore light, sound and installation. Some of our artists discuss their work...

Molly Reeve: "I am an Art Foundation student specialising in sculpture, usually involving wood carving, plaster and latex. I use both earthy and industrial materials and my work is often very instinctual and playful. My sense of touch is an important component in my work, operating through reciprocal engagement between myself and materials which I use to create my own visual language and mythology. I often explore themes related to our sense of place in relation to the natural world, the secrets and memories the earth holds, our lasting impressions on the land and traces of human presence."

Jimmy Croft: "I am an artist who enjoys painting as an expressive release and as a form of therapy. My work is a constantly evolving conversation from confronting fears and worries on some days to celebrating life on others. I work intuitively, practicing sporadic mark making in combination with techniques I've picked up from art school. I enjoy conjuring up bold, playful paintings and wish to encourage others in using art as a release - being free from fears and judgement. I am also half of the dynamic duo Dangervitch and Neptune; creators of surrealist short films."

Evie Lola-Minney: "Studying with a particular fondness of 'concept' at art school has given me a lot to think about, with the likes of social

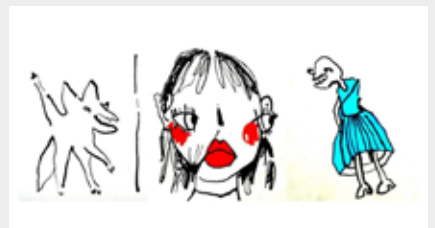
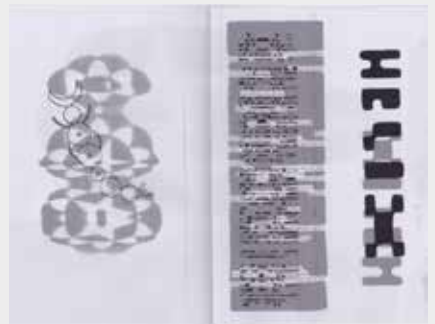
history and anthropology regularly aiding my practical endeavours. I am one half of art duo, Dangervitch and Neptune, where we aim to confront the boundaries of normality and encourage open-mindedness via time-based media. These ideas tend to evolve naturally into surreal film, sculpture, drawing and written word. Peace."

Thom Deane: Greatly inspired by their working-class upbringing, Thom creates works aiming to challenge the ethics of the middle classes, commonly viewing them as the bourgeoisie invader. Through the chosen delivery method of rudimentary iconography, the sweeping act of gentrification is commonly approached in an attempt at dismantling.'

This exhibition celebrates unity, no matter who you are the event is for you, whether you simply want to come and chat or listen to some live music. We hope you will come join us in building our new world.

.....
Close To Direct Sunlight opens on Saturday 26th June and runs until Sunday 4th July. For news and updates follow Studio 18 on facebook @Studio18Stroud

—
STELLA HOWE IS AN ART FOUNDATION STUDENT SPECIALISING IN LIGHT, VIDEO AND INSTALLATION.



RICK VICK

BY JUDITH GUNN



“I’ll never forget my first impression - there he was with the distressed leather hat, - five days stubble, and an ancient briefcase ...” This was Steven John’s first memory of Rick Vick and his way of seeing. When Steve first moved to Stroud he joined Rick’s poetry writing class at Stroud College “an emotional outlet as well as a creative one” such was the quality of his teaching.

First impressions of Rick are not to be forgotten, “There was the leather hat” says Fern Bywater, his niece, “the leather jacket and sometimes the long blue smart coat.”

In fact that was also my first impression of him at Stroud Valley Arts Space, back in the days when we could all cram into a tiny space, spilling drinks and breathing the same air. We were all there to listen to a raft of wonderful short stories and it was then that Rick swept past me, hat on, long trench coat creating a breeze as he stepped up to read. He appeared a record breaking seven times at Stroud Short Stories, although, according to legend, he did not always read the story that he had sent in and had accepted.

Fern Bywater and Steven John have collaborated, with the help of poet Philip Rush of the Yew Tree Press, to put together an anthology of Rick’s stories and poems, *Ways of Seeing*, published by ChapelTown Books. This was something he began before his death, which Fern and Steve have seen through to completion.

Rick had been a part of Stroud life for over twenty years before his death in November 2019. Readers of Good On Paper may remember that he worked with his former schoolmate and life

long best friend, documentary maker Nick Broomfield, on the documentary *Marianne and Leonard: Words of Love*. Rick lived on the Greek Island of Hydra for fourteen years, but came back to Kent to see his sisters and other family once a year. “They were close siblings” says Fern as she recalls trips to Hydra as a child and, when her parents’ marriage ended Rick “was like a father figure from the beginning”. Years later Fern joined him for a gap year in Victoria on Vancouver Island, where Rick was a ferryman and ran harbour trips but, according to Fern, he always missed England.

On his return to England he came to land-locked Stroud where he found a creative community of like-minded people and “dived straight in”. He worked for The Space down on Lansdown turning it into a place for youth activities and music nights. He may have missed the seclusion that living on Hydra offered, and perhaps the sea, but “once he had children” Fern says, “he was very focused on that journey” and the youth work was part of that.

Pretty soon he started working with Stroud Festival, now Stroud Arts Festival, where Fern, an events organiser, worked with him after

she moved to Stroud from Bristol. “Originally, when he came to Stroud”, says Fern “he retrained and taught English as a Foreign Language and then that grew into a more creative experience. He was always moving things onto poetry and getting people into writing.”

He was about the people and that is reflected in *Ways of Seeing*. Originally an anthology of his short stories it expanded to poetry but its focus is on people. “There is always the theme of people’s complete acceptance, the human condition.” Rick’s late daughter Faye, who tragically passed away in January of this year, dedicated a poem to her father, also in the anthology. In the poem, Faye speaks of his love for the underdog.

Rick found that his work with recovering addicts and ex-offenders for the Nelson Trust in Brimscombe, extremely rewarding. The Vick family will be donating the royalties from the sale of the book to the charity.

“Like Hemingway, Carver or Chekhov, Rick didn’t judge his characters in his writing” says Steve. “He told the story objectively, and that’s how Rick was in real life. He accepted people for who, not what, they were.”

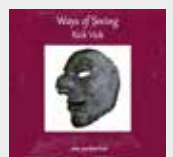
Was his work underrated? After all he is known as the Stroud Poet and there are quite a few contenders for that title! Steve says he was always trying to get him to send his work away to magazines but he would say he hadn’t got time, says Fern “it was about the creation not about the fame, he liked helping other people”.

It was also about writing, he would fill one page of his notebook every morning, he would tell his poetry class which later became The Ale House Poets, to “let the pen do the writing” Steve recalls - “he was telling us not to

overthink it”. Steve has graduated from The Ale House Poets, which was run for a fiver or a pint for years and now he has an MA in Creative Writing from the University of Gloucestershire and runs the online literary magazine the Phare (featured in *GOP* Issue 69). Steve believes that none of that would have happened if he had not joined that Rick Vick poetry class back in the day.

A lot of what Rick writes is autobiographical, Fern can see the man and those she knows in his works and cites his sensitivity in the poem *Prayer* which is featured in the book. Rick’s poem recalls an encounter with a dead badger and his moment of communion with it - he offers so much more than just the description. In his poem he sees it, who it is and where it has been. Steve cites *Seeing* about a young boy who watches a woman walk into the sea and is left in a dilemma (no spoilers) as his favourite in the anthology: “as with any well-written short story, much of the meaning is implied, with any final answers left to the reader.”

.....
Ways of Seeing is published by Chapel Town Publishing (chapelownpublishing.uk) and available now from Stroud Bookshop, the Yellow Lighted Bookshop in Nailsworth and online at hive.co.uk



JUDITH GUNN IS A FRUSTRATED SCREENWRITER AND THE AUTHOR OF *DOSTOYEVSKY: A LIFE OF CONTRADICTION*. SHE HAS TWO STORIES IN THE LATEST EDITION OF *STROUD SHORT STORIES* AND IS THE CREATOR OF ONLINE EDUCATIONAL CONTENT AND BOOKS. SHE DOES THIS WHILE TUTORING STUDENTS ONLINE AND WRITING THE GREAT NOVEL. JUDITHGUNN.COM

LISTINGS

MONTHLY GUIDE TO ARTS & CULTURE THROUGHOUT THE STROUD DISTRICT.

ART

GALLERY PANGOLIN

SAT 15TH MAY - SAT 3RD JULY

Ann Christopher: Broken Time

Ann Christopher's first solo exhibition at Gallery Pangolin includes a series of fifteen new drawings created during lockdown. Christopher, who has curated the exhibition herself, has put a ten year timeline on the works included. It's not a retrospective, it's a collection of works that work together in her mind, many of which have never been shown at Gallery Pangolin before.

gallery-pangolin.com

GALLERY 1673

SAT 19TH JUNE - FRI 2ND JULY

A Brave New World

An exhibition of contemporary art and ceramics by four locally based artists - Alison Vickery, Tim Woolner, Wei Keong Tan and James Gallagher. 10am-5pm

theclayloft.co.uk/gallery-1673

HALLIDAYS MILL

SAT 19TH JUNE - SAT 3RD JULY

Mandy Coppes-Martin: Paper, Thread and Madagascan Silk

Mandy Coppes-Martin works with specific fibres, threads and silks - which weave through her drawings and sculptures - taking the viewer on a journey through traces of the past. In this exhibition Mandy is collaborating with a project in Madagascar and will be working with Madagascan wild silk. The wild silk is being grown as part of a poverty alleviation programme which in turn is keeping the indigenous forests alive through sustainable practice.

hallidaysmillgallery.com

HAWKWOOD

SUN 20TH - THURS 24TH

Japanese Embroidery

This unique art form originated in

Buddhist temples and is used for the elaborate decoration of Kimonos. This rarely taught skill has been based at Hawkwood for over twenty years. Using traditional methods and techniques you will produce truly stunning works of art and learn about Japanese culture. All levels are welcome. 4pm £450(non-residential)/£650(residential)

hawkwoodcollege.co.uk

LANSDOWN HALL AND ART GALLERY

WEDS 2ND - MON 7TH

Phillip Edwards: Being Human

This exhibition illustrates moments in time. Moments associated with the people and their marks. It also represents the artist's moments, understanding of their place and his reaction to it. From these moments the viewer can evolve thoughts of their own. 10:30am - 4:30pm

WEDS 9TH - SUN 13TH

Kirsty Limburn: Remembering Joel

A photographic, mixed media and live art tribute to Kirsty's son Joel Limburn(05/10/93 - 13/11/18). An open grief space for anyone who has lost someone to the war on drugs. Weds-Fri 10am-5pm/Sat - Sun 10:30am-6pm

TUES 15TH - SUN 20TH

Keith Symonds: Visage

Visage is the name of an exhibition by Stroud based artist Keith Symonds, who will be showing numerous oil paintings and pencil drawings of mainly local people in his first solo show for four years. Keith has become increasingly fascinated by portraiture and has built monthly, clothed portrait sessions into his programme of study at Stroud Life Drawing, the twice weekly classes he runs at the Centre for Science and Art. In addition to the portraits, the exhibition will also include a series of nudes, painted during the enforced lockdown of 2020. Keith's working method begins with a pencil drawing of the sitter/model and this study is then used as a reference when

painting in oils. Careful observation is fundamental to the process and many of the original pencil studies will be framed and on show. Additionally, Keith's portfolios of life drawings will also be on display for visitors to enjoy. 9:30am-4:30pm

WEDS 23RD - MON 28TH

Herb Tandree: Summer Exhibition 2021

The exhibition includes paintings featuring the 'Colours of Morocco' and other works in pastel, oil, painted glass, mobiles and assemblages. These are abstract works using vivid colours, which can be considered as a celebration of the opening up after the recent winter/spring lockdown. Weds-Sun 10am-5pm/Mon 10am-3:30pm

WEDS 30TH JUNE - MON 12TH JULY

CQ West: Unfolding Stories 4

An exhibition of new work by the artists of CQ West. Using textiles as their medium each artist expresses a variety of narratives using fabric and stitch. Paint, print, drawings, colour, abstraction and new technologies are embraced and combined by many of the artists along with a host of other techniques and materials, creating an impressive and fascinating exhibition. 10am-5pm, exhibition closes at 3pm on Mon 12th July.

lansdownhall.org

META LAUNCH FESTIVAL

SAT 19TH JUNE - SUN 27TH JULY

A mini arts festival to celebrate the launch and collaboration of META, Weven and Tomari-Gi orbiting around their central and introductory exhibition. 'Estival'. Events will include: private view, film nights, musical performance, paper wildflower workshops, botanical dyeing, basket weaving, family mask making, drawing and painting workshops, storytelling, artist talks and closing party...

weven.co.uk/events

MUSEUM IN THE PARK

TUES 18TH MAY - SUN 4TH JULY

Society of Wood Engravers 83rd Annual Exhibition

The Society exists to promote wood engraving, but also embraces all forms of relief printing, which makes this show a fascinating and affordable collection of images inspired by a wide range of subjects. It was founded in 1920 by a group of artists that included Philip Haggren, Robert Gibbings, Lucien Pissaro, Gwen Raverat and Eric Gill. They held an annual exhibition that attracted work from other notable artists such as David Jones, John

and Paul Nash, Paul Gauguin and Clare Leighton. The group thrived until war broke out, disrupted the demand for their work and cut the supply of materials. In the years that followed, there was a return to the annual exhibition but the group and the cultural context had changed. After a decade in which there were no exhibitions, the SWE was revived in the early 1980s and has built up an international reputation for excellence. The annual touring exhibition, stringently selected from an open submission, visits several venues each year, showing the best of current work from Britain and other countries.

museuminthepark.org.uk

THE PAINSWICK CENTRE

FRI 28TH MAY - MON 30TH AUG

Handmade In Painswick

A pop-up shop for the summer showcasing incredible local makers and artisans all based in and around Painswick. From art to jewellery to food to flowers featuring the Bespoke Flower Company, the Painswick Beekeeper honey, local artists Rupert Aker and Jennie Barber, hand knitted woolies from the Tibbiwell Alpacas, jewellery from Photogem and Ooblin, amongst many more! 10am-5pm

painswickcentre.com

PREMA

WEDS 19TH MAY - SAT 26TH JUNE

Charlie Rogers

Young, passionate photographer Charlie Rogers is currently completing his studies at City of Bristol College. The subject matter for his creative work is often staged with an emphasis on interpretation whereas other pieces are captured themselves by virtue of their composition and their normality. Currently Charlie is working on a series of album covers for his diploma studies.

WEDS 19TH MAY - SAT 14TH AUG

Christine Dack

From her Gloucestershire base, painter Christine Dack has become a prolific explorer, regularly dotting about the country to conquer hills and mountains, always drawing and painting and finding flashes of inspiration for her next painting. In recent years the Severn Valley and the woodlands of North Wales have brought about an impressive body of work; paintings in various scales and a family of sketchbooks in which the artist explores colour and texture.

prema.org.uk

NEW RELEASE



MAJA LENA

The Keeper, the debut album from Maja Lena featuring singles 'Avalanche', 'Sacred Practice' and 'Birch' as heard on BBC 6 Music and BBC Radio 1 is currently up for pre-order on vinyl via Diggers Factory (diggersfactory.com). The record is limited to just 200 copies, printed on heavyweight black vinyl with beautiful self produced artwork.

facebook.com/MajaLenaMusic

SELECT ARTS TRAIL

SAT 19TH- SUN 20TH/SAT 26TH - SUN 27TH

Select Arts, formerly SIT select, is bringing artists and the public together this summer through the Select Trail open studios. A rare opportunity to look behind the scenes and meet makers in their workspace, the Select Trail will renew the ties of community that make our local art scene. With a renewed focus on the Five Valleys, the studio visits will be supported by the Select Trail brochure and guided routes that make the most of what the locations offer. A new feature at this year's Select Trail is the Young Artist's collective which will platform selected emerging artists. There will also be a programme of events held online or in-person -government regulations permitting.

selectartspresents.com

STATION GALLERIES AT STROUD AND STONEHOUSE RAILWAY STATIONS

Let's Create Stuff

An exhibition celebrating the magic of the landscape and our connection with nature through a colourful and playful exploration created by Stroud based illustrator Hatty Staniforth and moving-image artist Katherine Glynn-Jones who are both part of the Let's Create Stuff collective. Footage captured on walks in Stroud forms the basis for 12 prints by Hatty and also a short video piece by Katherine, which can be found at @okletscreatestuff. This work forms a series of exhibitions by local people at Stroud and Stonehouse railway stations.

cscic.org

STROUD OUTDOOR ART FAIR

SAT 12TH

The first in a new outdoor visual arts fair to be held on the Sub Rooms Square. The fair brings together the work of over 35 Stroud based artists, a diverse range of visual arts including, sculpture, pottery, painting, drawing, textiles, collage, graffiti, jewellery and more...9am-4pm

ST ROSES OLD CONVENT

SAT 19TH- SUN 20TH/SAT 26TH - SUN 27TH

Millie Wood Swanepoel: A Little Bit of This and A Little Bit of That

Open Studios event as part of this year's Select Art Trail at the Courtyard Art Room showcasing works in ceramics, painting and collages by artist Millie Wood Swanepoel. 10am-5pm (by appointment - 07754 182 082 / m.wood.swanepoel@gmail.com)

milliewoodswanepoel.com

THE SUB ROOMS

MON 17TH MAY - TUES 22ND JUN

Everything Is Light

A fantastic family attraction featuring a maze of illuminated tunnels and hidden rooms bathed in colour – all from the unbridled imagination of Jack Wimperis.

thesubrooms.co.uk

SVA

SAT 15TH MAY - SAT 5TH JUNE

Colin Higginson: In The Manner In Which It Appears

Through sculpture this exhibition explores ideas of nature, nostalgia, imitation and authenticity. The artist is interested in how we relate to the natural world through objects whether found, made, domestic or mundane. The use of materials and process of experimentation are an important aspect of the work. Materials such as graphite, copper sulphate and resin are utilised to create work that alludes to geological and archaeological objects. SVA in collaboration with artist Colin Higginson has commissioned two writers Ana Hine and Noor-e-Sehar Ali to produce a written response to the exhibition. The commissioned writers will take residence in the gallery space for 3 days each and also run a creative writing workshop to engage participants in responding creatively to the exhibition. The exhibition and Call and Response will conclude in a finished publication and public event later in the summer. Weds-Sat 10am-4pm

sva.org.uk



DECOLONISING GLOUCESTERSHIRE

Decolonising Gloucestershire is a recently launched history project that looks at the impact of our locality and county upon the globe through Empire, colonisation, trade, and enslavement; and the consequent reverse impact upon our county and locality.

decolonisinggloucestershire.wordpress.com

THREE STOREYS

THURS 17TH - SUN 27TH

Ground Works: Place-Time-Material

Ground Works will be welcoming artists and writers whose inspiration and concern is for our landscape and environment. It is the umbrella for two projects called 'Landlinks' and 'Earthbound', exhibitions and linked events in the new Three Storeys in Nailsworth. Exhibition 1: EarthBound - ft new works by artist/papermaker Jane Ponsford and ceramicist/curator Kim Norton. Their unique collaboration resulted in unexpected responses to their local landscapes. The studies and resulting objects, artefacts and pieces represent an artistic conversation about 'Earth' with each exchange signifying the contributor's counterpoint and response to the previous statement. Meet the Artists over the weekend of 26th and 27th. Workshop with Jane Ponsford on Mon 28th June. Exhibition 2: Landlinks – The unattached landscape. 'Landlinks' represent work made by over 20 walking artists and was synchronised to take place over several continents. Artists responded to a 'time/distance walking script' - adhering to various 'prompts' that governed their progress and choices, forcing them to let go of the desire to find the definitive subject and to leave that choice to chance – films, 2D and 3D work on display. Curated by Kel Portman of 'Walking the Land' and Lizzi Walton (groundworks.org.uk). 10am-4pm

threestoreys.co.uk

VICTORIA WORKS STUDIOS

SAT 12TH

Botanical Summer Plaques in Plaster Workshop

Join artist, Emily Joy, for an introduction to casting with clay and plaster. This creative workshop will enable you to make intricately detailed plaster wall plaques, showing all the glorious form and texture of our summer foliage and flowers. Bring along flowers that are special to you or simply choose from the array of handpicked flowers and foliage provided. 10am – 4pm, £80

SUN 13TH

Beginners Crochet Day

Join expert crafter Katy Bevan for this beginners crochet class, starting with the basics and working at the your speed, so you will never be left behind. Be warned, it's addictive, you won't want to stop! 10am – 4pm, £65

SUN 27TH

Lino printed Lampshades Workshop

Join fabric designer Lizzie Mabley for this one day workshop designing and printing your own unique lampshade, Lizzie will support you simplifying your design and then show you how to carve the lino. Using your block, you will print a length of fabric which you will use to construct a 30cm drum lampshade. 10am – 4pm, £70

victoriaworksstudios.co.uk

WORLD TEXTILES WEEKEND

SAT 26TH - SUN 27TH JUNE

The World Textiles Weekend returns to Bisley Village Hall featuring works by Linda Clift, Martin Conlan of Slow Loris, Nataliya Cummings of Experience Ukraine, Jennifer Evans of Jenpatola, John Gillow, Polly Lyster, Dorothy Reglar, Tiger Moth plus food, contemporary designed Asian wearables and much more...

textilefairs.co.uk

NEW BREWERY ARTS CIRENCESTER

SAT 26TH JUNE - SUN 5TH SEPT

Misshapes: The Making of Tatty Devine

An exhibition celebrating 20 years of a personality-packed jewellery brand. Tatty Devine's founders Rosie Wolfenden and Harriet Vine set up a stall in Spitalfields Market in East London in the mid 1990's. Not long after, they invested in their first laser cutting machine, going on to create a personality-packed jewellery brand much loved and still culturally relevant 20 years on. Their DIY, unknowingly anarchic approach resonated with an industry and public who were hungry for something different from the commercialised, mass produced products on offer. Turning throwaway disposable objects like scraps of leather and guitar plectrums into jewellery not only



STROUD OUTDOOR ART FAIR

The first in a new outdoor visual arts fair is due to take place on the 12th of June outside the Sub Rooms from 9am-4pm. Organised by Chris James it brings together the work of over 35 Stroud artists including Helen Fox, Kerry Phippen, Christine Boys, Amy Primarolo, Lyndsay Grant-Muller, Jessy Plant, Albie Lucas, Freya Tate and many more...

landed the brand in Vogue magazine but also in the hearts of loyal fans all over the world. Their work and collaborations have become markers of the time they were made in. Tatty Devine has always worked closely with musicians, artists, designers and brands from Gilbert and George to Belle and Sebastian - all people they feel a connection to. Creativity, self-expression and hand-making are at the heart of everything they do. This exhibition is the first retrospective of Tatty Devine and will explore entrepreneurship, innovative British making and the power of creativity.

newbreweryarts.org.uk

COMEDY

THE SUB ROOMS

SUN 6TH

Tiff Stevenson

As seen on ground-breaking shows, *Mock The Week*, *The Office*, *White Gold* and *People Just Do Nothing*, Tiff Stevenson is an award winning stand-up comedian whose thought-provoking satire has made audiences laugh worldwide from London, Sydney, Montreal, New York, Shanghai and beyond. (Optional pre-show dinner from Tomari-G!)

THURS 10TH

Andrew Lawrence

One of Britain's most subversive and intelligent comedians, Andrew Lawrence, has been lauded with many awards and nominations for his comedy including winning The BBC New Comedy Award, and being twice nominated for The Fosters Edinburgh Comedy Award, and is now a regular name at The Edinburgh Fringe, having currently written no less than 13 shows for the festival. (Optional pre-show dinner from Tomari-G!)

thesubrooms.co.uk

FILM

LANDSDOWN HALL

SUN 13TH

Lansdown Film Club Presents: The County

A widowed farmer begins a new life on her own terms by fighting against corruption and injustice in her community. With introduction and post screening discussion led by Maia Elliott. 7:30pm £6/£5concs

SUN 20TH

Lansdown Film Club Presents: And Then We Danced

A passionate coming-of-age tale set amidst the conservative confines of modern Tbilisi, the film follows Merab, a competitive dancer who is thrown off balance by the arrival of Irakli, a fellow male dancer with a

rebellious streak. With introduction and post screening discussion. 7:30pm £6/£5concs

SAT 26TH - SUN 27TH

Dramarama Youth Theatre: Land of Nod

An original musical production, filmed due to Covid restrictions. 'Do you think there's someone out there who makes up our dreams?' Welcome to the land of Nod; the place where dreams get dreamt up. All is not well in Nod and it's turning into a bit of a mare. What will it take before people can sleep peacefully once more? Sat 2pm and 5pm/Sun 11am and 2pm

lansdownhall.org

SPOKEN WORD/ LITERATURE

CENTRE FOR SCIENCE AND ART

THURS 17TH

Burning Pink: Reasons To Be Cheerful

Roger Hallam from new anti-political party Burning Pink present *Reasons to be Cheerful*, despite the climate crisis and Covid! This year they are touring round the UK to mobilise people to make history covering the State of the World, the Climate Crisis, Burning Pink, Council Tax Strikes, demand for mass insulation and the need for high stakes action to be taken before COP26! Come along and discover levels of courage within yourself that you never knew you had...7pm Free (register via eventbrite.co.uk)

burningpink.earth

HAWKWOOD COLLEGE

THURS 3RD ONLINE

Conversations That Matter: The Secret World of Weather

This conversation brings practical understanding to the poetic mystery of our world and weather. Exploring the intimacy that is present as we bring our attention closer to where we are in the natural world at this moment in time. The Secret World of Weather will have Tristan Gooley in conversation with Julian Hoffman and Hawkwood team Matthew Shaw and Miriam Buck. Topics include, the art of seeing, hearing, and being with and amongst the living. 7pm hawkwoodcollege.co.uk

THE NUTSHELL STUDIOS

SAT 12TH - SUN 13TH

Brenda Waite and Anna Cady: Movement and Words Workshops

Following on from the Stroud Film Festival screening of their film 'Invisible' and their Residency at SVA, Brenda Waite and Anna Cady are offering TWO workshops combining movement and words in response to film, body, and space. 10am-2:30pm £20 per workshop

JOHN BEST PLAYLIST

"WHEN MYSELF AND DAVID SHEPPARD WERE ASKED TO PROVIDE MUSIC FOR EVERYTHING IS LIGHT AT THE SUBS A LOT OF THESE SONGS WERE ON THE SONIC MOODBOARD. WE'D BEEN ENCOURAGED TO CREATE SOMETHING "UPLIFTING", BUT THAT'S NEVER BEEN MY GO-TO IN DARKER TIMES, I ALWAYS FEEL MORE LIKE DOUBLING DOWN ON THE INTROSPECTION, AND LOOKING FOR BEAUTY AND PARADOXICAL HOPE IN THE GLOOM. MUCH OF THIS MUSIC IS ALSO VERY VISUAL, EITHER USED IN FILMS OR JUST PAINTING PICTURES IN YOUR HEAD. AND THERE'S ALWAYS PATA PATA, SURELY ONE OF THE HAPPIEST SONGS EVER MADE..."

[INSTAGRAM.COM/LOSS_GAIN](https://www.instagram.com/loss_gain)

SEARCH ON SPOTIFY FOR 'GOOD ON PAPER -JOHN BEST PLAYLIST' OR SCAN THE QR CODE AT THE BOTTOM OF THE COLUMN...

1. **Floating Points, Pharoah Sanders, London Symphony Orchestra:** Movement 1
2. **Alice Coltraine, Pharoah Sanders:** Journey In Satchidananda
3. **Johann Johannsson:** Odi et Amo
4. **Nina Simone:** 22nd Century
5. **Brian Eno:** On Some Faraway Beach
6. **Ryoji Ikeda:** Data.Microhelix
7. **NEU!:** Hallagallo
8. **Matching Mole:** O'Caroline
9. **Liquid Liquid:** Lock Groove (In)
10. **Lyn Cornell:** African Waltz
11. **Cosmo Sheldrake:** Hocking
12. **Saint Petersburg Radio and TV Symphony Orchestra, Stanislav Gorkovenko:** Carnival of the Animals - No.7 Aquarium
13. **Raymond Scott:** Sleepy Time
14. **Funkadelic:** Maggot Brain
15. **Gunild Keetman, Karl Peinkofer Percussion Ensemble:** Vier Stücke für Xylophon: Gassenhauer nach Hans Neusiedler
16. **The Chico Hamilton Quintet, Buddy Collette:** Blue Sands
17. **Les Troubadours Du Roi Baudouin:** Sanctus
18. **Tsegue-Maryam Guebrou:** The Homeless Wanderer
19. **Dan Deacon:** When I Was Done Dying
20. **The Roches:** Hammond Song
21. **Frakkur:** PP1
22. **周璇:** Age Of Bloom (Hua Yang De Nianhua)
23. **Gal Costa, Caetano Veloso:** Baby
24. **Tommy James and the Shondells:** Crimson and Clover
25. **James Canty:** Deborah
26. **Hanz Simmer, Gavin Greenaway:** God Yu Tekem Laef Blong Mi
27. **Richard Swift:** The Novelist
28. **John Prine:** Sam Stone
29. **Dead Man's Bones:** My Body's A Zombie For You
30. **The Breeders:** Off You
31. **Aphex Twin:** Avril 14th
32. **Yoko Ono:** Mind Train
33. **Miriam Makeba:** Pata Pata
34. **Sandy Denny:** Who Knows Where The Time Goes?

SCAN WITH YOUR PHONE CAMERA TO ACCESS THE PLAYLIST!



(Booking essential! Places limited to 6 participants per workshop) For further details and booking info, please contact Brenda: redwaite@yahoo.com

nutshellstudios.co.uk

PREMA ARTS CENTRE

THURS 17TH

Writing for Wellbeing

This past year has brought many challenges but finding ways to support our own wellbeing has become more important than ever. This evening come and explore how creative writing techniques and methods can be a way to help support emotional wellbeing. Led by Sarah Erskine this workshop can help you unlock and encourage your creativity by exploring and experimenting with writing in a safe, playful and interactive way. The course will develop your self-confidence, enable you to discover your writing voice and inspire you to express yourself through your writing. 7-9pm £14/£12concs

prema.org.uk

STROUD DISTRICT GREEN PARTY CLOUD CAFE

WEDS 9TH ONLINE

Footpaths and the Right To Roam

If the last year has taught us anything, it is how much we value our countryside and the enjoyment of walking through it, travelling to work or school without using the car, finding new routes and discovering places previously unknown to us. This session will explore some of the new and exciting opportunities, both local and national, being planned to improve access to the countryside and some of the barriers that have prevented it. Daniel Raven Ellison, guerrilla geographer and brain child of "Slow Ways" will be speaking along with Alan Bently, Principal Rights of Way Officer GCC, and others. There will be opportunities to ask questions and join the conversation during the session. Everyone is welcome. 7:30-9pm

stroud.greenparty.org.uk

THREE STOREYS

THURS 24TH

Ground Works: Robin Walters - Living With Trees

Robin Walters 'Living with Trees' - Writer, arborist, forester, environmental campaigner, naturalist. Join Robin for an evening of lively conversation and sharing of ideas. Copies of the book Living With Trees will be on sale. 7pm £6/£5concs from Yellow Lighted Bookshop (yellowlightedbookshop.co.uk)

FRI 25TH

Ground Works: Adam Horovitz and Becky Dellow - The Apple's Rounded World

The Apple's Rounded World is a unique guided tour of the Slad Valley in poetry and music. Originally commissioned for Laurie Lee's centenary, is a non-stop lyrical guide to the valley performed by poet Adam Horovitz and fiddle player Becky Dellow. It features poetry and prose from the Slad Valley written by Laurie Lee, Frank Mansell, Horovitz and his poet parents Frances and Michael, and covers nearly every decade from 1914 onwards. Woven in among the poetry and prose are English folk tunes, many of which would have been played by Laurie Lee. 7pm £10 (groundworks.org.uk)

SAT 26TH

Ground Works: Earthbound - In Conversation With Jane Ponsford and Kim Norton

An Illustrated talk/discussion/conversation on the Earthbound exhibition featuring new works by artist/papermaker Jane Ponsford and ceramicist/curator Kim Norton as part of 'Ground Works' project. Their unique collaboration resulted in unexpected responses to their local landscapes. The studies and resulting objects, artefacts and pieces represent an artistic conversation about 'Earth'. This Conversation with Jane and Kim looks at 18 months of exchanges and sharing. Cafe/bar will be open. 5pm

threestoreys.co.uk

THE THUNDER MUTTERS

ONLINE

Poetry and traditional folk fiddle music from the British Isles presented by poet Adam Horovitz and fiddle player Becky Dellow. Featuring poets such as John Clare, Thomas Hardy, Blake and other Romantic poets with fiddle tunes

NDP CIRCUS

NDP Circus in partnership with School of Larks and Woodchester Mansion have announced a unique opportunity to participate in a two-week intensive training and performance experience. Applications are now open for people aged 16 or over that would like to take part culminating in a public performance at the Mansion. ndpcircus.com



KONSTRUCT

A new project featuring Andrew Heath, Phonsonic and Simon McCorry announce their debut album. Following the start of social restrictions, they found themselves considering new ways to collaborate that circumvent the barriers placed upon everyone. Three (Squared) will be released via Rusted Tone Recordings as a download and on tape.

rustedtonerecordings.bandcamp.com

NEW RELEASE

from 18th and 19th...The Thunder Mutters is a podcast in love with music, and with the music of words. Presented fortnightly by poet Adam Horovitz and fiddle player Becky Dellow, it takes its name from the poem by John Clare.

the-thunder-mutters.captivate.fm

MUSIC

HAWKWOOD COLLEGE

THURS 17TH ONLINE

Music That Matters: The Mirry Project

Tune in for a Music that Matters episode with Simon Tong, Tom Fraser, Kirsteen McNish, Camella Kirk and Rupert Morrison who between them put the Mirry project together. 30 years ago, Edinburgh-based musician Tom Fraser was helping with the house clearance after his grandfather's death and found an old, scratched Transco record left out on the street. He took it home where it sat on a shelf for years, until one day during lockdown, he gave it a play; and a whole world opened up to him. His Great Aunt Mirry had recorded a number of piano compositions that she had kept secret from her family. Since then, Tom has been re-working and re-mixing her compositions with his brother-in-law Simon Tong (The Verve, The Good the Bad and the Queen, and The Magnetic North) and together with project curator Kirsteen McNish they hope that this secret life will now reach beyond Mirry's own four walls. This event will be hosted by Hawkwood Curator Matthew Shaw and it will be delivered via Zoom. 7pm £7/£5concs

WEDS 23RD ONLINE

Music That Matters: Alabaster dePlume

Tune in for a #MusicThatMatters episode with singer, songwriter and saxophonist Alabaster DePlume, well known for bringing theatrical spoken word to music audiences. "One of the most thrilling performances I've seen this year; a reminder of how vital and adventurous music can be" - Laura Barton, The Guardian. This episode will explore the topics of music, caring, mental health and how they

interweave. Hosted by Hawkwood CEO Alicia Carey and Matthew Shaw. 7pm £7/£5concs

hawkwoodcollege.co.uk

THE PRINCE ALBERT

WEDS 9TH ONLINE

Sam Brookes

With this intimate socially distanced gig at the Prince Albert selling out in minutes the event will now also be live streamed on YouTube at 7:30pm on the 9th June! Sam will be joined by a full band showcasing tracks from his new album Black Feathers.

theprincealbertstroud.co.uk

STROUD BREWERY

SAT 12TH

The Honeymoon Swing Dance Band

The Honeymoon Swing Dance Band is a five piece group with drums, bass, piano, guitar and violin and vocals from Andy Janik and Matt Gryspeerdt. Jazz dance styles from the 1920s to the 1950s...8pm

stroubrewery.co.uk

THE SUB ROOMS

SAT 5TH

Immi Dash and Cameron Burr

Immi Dash and Cameron Burr come together on June 5th bringing an atmospheric blend of sultry tones and electric contemporary beats. Drawing from jazz, R&B and hip-hop roots, they blend subtlety with powerful melodic anthems. Featuring guest sounds and vocals. 8:30pm

SAT 12TH

Albino Tarantino

Coming to you all the way from Stroud, Albino Tarantino is the brain-child of singer songwriter Aron Attwood. After releasing his self-penned debut Album, Magic 8 Ball in 2017, Aron looked for a way to bring his music to a live audience. Gathering the cream of local musicians, Aron re-conceived a selection of his solo tunes and gave them a distinctive Latin tang. This mix of blues and latin references draws on influences from both genres in a melting pot of new flavours.

PERFORMANCE ART



COVID SECURE
CROWN & SCEPTRE

OPENING TIMES

MON TO THU 3-10PM - FRI & SAT 12-10PM - SUN 12-8PM

BOOKING TABLES ADVISABLE, RULE OF 6 APPLIES

REAL ALES, CIDERS, LAGERS, WINES & SPIRITS



THE COMMUNITY SHOP WILL REMAIN OPEN

HOME COOKED TAKEAWAY MEALS, SUNDAY LUNCHES,
FRESH FRUIT 'N' VEG & SOURDOUGH BREAD,
DRY & TINNED GOODS AND GENERAL CONVENIENCES

FOLLOW US ON FACEBOOK TO STAY IN THE LOOP

 [FACEBOOK.COM/HATANDSTICK](https://www.facebook.com/hatandstick)

THE CROWN AND SCEPTRE, HORNS ROAD
STROUD GL5 1EG - 01453 762588
WWW.CROWNANDSCEPTRESTROUD.COM



STROUD BREWERY
TAPROOM

Cafe, bar, live music, events, community hub.



BOOK YOUR TABLE AT:

www.stroudbrewery.co.uk

Stroud Brewery, Kingfisher Business Park
London Road,
GL5 2BY



SLOW
TEA.
SLOW
DOWN.



Loose Leaf
Hand Made
Chinese Tea

From the gardens
above the clouds
straight to your cup

BLACKCLOUDTEA.COM
[@BLACKCLOUDTEA](https://www.facebook.com/blackcloudtea)



GROUNDWORKS
PLACE • TIME • MATERIAL

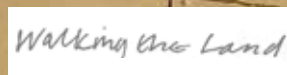
A creative response to the land,
habitat and environment that brings
together international artists,
poets and writers in exhibitions,
walks, talks and workshops.

June 17th - 27th
open 10:00 - 16:00

Three Storeys

Old Bristol Road, Nailsworth, Gloucestershire GL6 0JE

w: groundworks.org.uk
facebook: [@groundworksart](https://www.facebook.com/groundworksart)
twitter: [@GroundWorks7](https://twitter.com/GroundWorks7)





THE SUB ROOMS

The Sub Rooms have been closed for almost 12 months - and cultural venues have been the last to open. This vital Stroud venue has been working hard behind the scenes to create a world class performance space and have just launched a crowdfunding campaign to help them through the next few months... Visit their site and support them.

thesubrooms.co.uk

FRI 18TH

Thabo

THABO first broke through as an artist singing with a Yorkshire hip-hop band in the late 2000s before embarking on his own solo career in 2011 with his three piece band The Real Deal. A two year stint with a major label followed including features with Idris Elba, Naughty Boy, Professor Green, Wilkinson & TenSnake. He graduated from that educational encounter with more focus and conviction in his mission - to deliver music that educates, entertains and empowers. Re-emerging with a heavier sound and deeper lyrics, a string of releases followed, each one a sharp and complete social statement. The stage is where THABO really shines, delivering an audience oriented performance that is dynamic and

charismatic, making it easy to understand why they call it bare knuckle soul!!!

thesubrooms.co.uk

CARPENTERS ARMS MISERDEN

SAT 5TH

Sally Ironmonger

Wonderful songs of closely observed life with a touch of humour. Sally always sells lots of CDs on her visits. 4pm Free

SAT 12TH

Julie July Band

The Julie July Band built their reputation on re-interpretations of Sandy Denny's songs, but have branched out with their own folk rock compositions and won much acclaim for their Lady of the First Light album. 4pm Free

SAT 19TH

James Slater

The West Country's Mr Americana never fails to put on an impressive show and is usually joined by a variety of local musicians on different numbers. 4pm Free

SAT 26TH

Sid Harvey with Mansfield Smith

Cheltenham singer songwriter Sid is well known for his varied songs, some with social commentary and others more light hearted. On this visit he is joined by Americana duo Mansfield Smith. 4pm Free

thecarps-miserden.co.uk

THEATRE

HAWKWOOD

TUES 29TH ONLINE

Trestle Theatre Workshop

Trestle Theatre Company will be running a three hour practical session Theatre Workshop online. You'll explore some of the mask and physical theatre techniques from their practice that have worked well online and in a blended / socially distanced classroom environment. The session will be run on zoom and will be a mix of practical exercises, discussion and sharing resources and approaches. 2-5pm £75

hawkwoodcollege.co.uk

RADIO

DEEPBED RADIO

A project led by artists and supported by artists that has set the task of profiling DJs and audio projects with roots or threads to artist led hubs in the Stroud and Gloucester area. Deepbed is an online station but it's also a meeting place for an emerging artists community with a common interest in each other's creativity. Follow Deepbed on facebook and instagram for weekly programme schedules and the website to listen back to previous shows or download the new app!

deepbedradio.org

STROUD LOVE RADIO

Stroud Love Radio is a local live and interactive 'pirate radio meets chatroom'. A DJ collective playing MOBO and World music SLR features 14 of Stroud's favourite DJs performing every weekend, Friday evening to Sunday. Selection ranges from the Northern Soul of veteran DJ Andy Edwards through to the Acidiscotek of Crooked Stylus. To listen, follow Stroud Lockdown Radio Facebook page, clicking on the links posted at showtimes.

[facebook.com/stroudlockdownradio](https://www.facebook.com/stroudlockdownradio)

VISAGE
PAINTINGS BY KEITH SYMONDS

LANSDOWN GALLERY
JUNE 15TH - 20TH

WELCOME TO THE OPEN STUDIO
SELECT ART TRAIL
Millie Wood Swanepoel MA(RCA)

"A LITTLE BIT OF THIS AND A LITTLE BIT OF THAT"
19th/20th and 26th/27th JUNE 2021

COURTYARD ART ROOM, ST ROSES OLD CONVENT, STROUD GL5 4AD
By appointment 10am - 5pm
07754 182 082

m.wood.swanepoel@gmail.com
www.milliewoodswanepoelart.com

Loganberry

TAKE-AWAY & COFFEE SHOP



Pleased to be located at the independent heart of Stroud High Street, Loganberry Cafe & Takeaway opened in Autumn 2020. We offer freshly ground Carrero Italian Coffee, prepared by barista trained staff. Non-dairy options are available to accompany hot drinks if that is your preference.

All our cakes, baked items and soups are home-made. Vegan and gluten-free options are also available. Please ask at the counter if you'd like more information. We are friendly and welcome your suggestions!

We have looked carefully at sustainability and, in particular, plastic waste. Our drinks' cups are compostable. Cardboard food boxes are recyclable, as is our cutlery.



New to the High Street

Find us:
26 High Street
Stroud
GL5 1AJ

Opening Hours:
Mon-Sat 09:00 - 16:00 / Closed Sundays

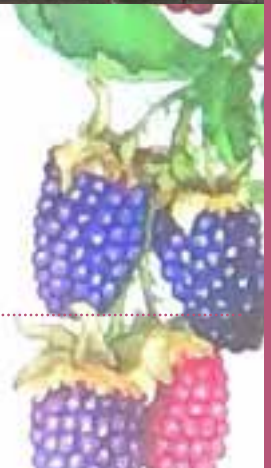
Facebook:
[@LoganBerryCafe](#)

Instagram:
[@loganberry_stroud](#)

Twitter:
[@LoganberryCafe](#)

**COVID
SECURE**

We are Covid secure and operate from behind a Perspex screen. Please see any additional guidance at the door.



CRUST ISSUES PIZZA

***FRESH PIZZAS & FAST OVENS.
BAGELS. COFFEE. CRAFT BEERS. DIPS.
POPPIN' CRUSTS & JAZZY TOPPINGS.
OFFICE LUNCHES. PARTIES. WEDDINGS.
3 DAY PROOFS & VEGAN NIGHTS.
PRE-ORDERS. BIKE DELIVERIES. EAT-INS.
MERCH & CHANGING MENUS.***

***M
E
N
U***



***M
E
N
U***

***STAY IN THE LOOP: @ CRUST.ISSUES.PIZZA
26 GLOUCESTER STREET - GL51QG - 07399037639
CRUSTISSUES.CO.UK***